

Consent forms

The consent form will be emailed prior to the day of surgery.

Please have the owner sign our consent form on admission. We will pick it up while we are in for surgery or you can scan and email it to us (info@mashvet.com.au).

IV access

Please place an IV catheter in a cephalic vein and attach to Hartmann's fluids and run at 5mg/kg/hr.

Premedication

MEDETOMIDINE 0.005mg/kg IV METHADONE 0.2mg/kg IV



PLEASE GIVE THE PREMED IV

Induction

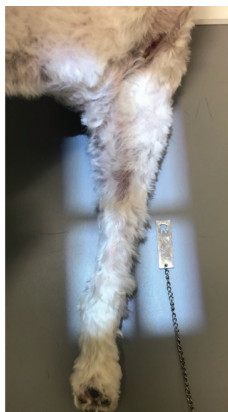
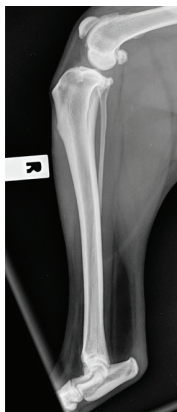
Please induce with alfaxan or propofol IV as normal. Provide a second entire induction dose, drawn up into a syringe and placed in a kidney dish.

Perioperative Medications

CEPHAZOLIN 22mg/kg. Please give slowly IV at anaesthetic induction – Patient will typically need 2 doses.
Please provide the second dose in a kidney dish.

BUPIVACAINE Please provide 2 syringes with 1.0mg/kg in each. Place in kidney dish.

Pre-Op and Post-Op Radiographs



Prior to our arrival, please radiograph the affected leg.

A mediolateral and AP are required. Ensure that the radiographs are well positioned, and the hock and entire stifle are in the view.

The exact same radiographic views will be required post op.



Patient clipping

Clip the patient with a #40 blade.

Ensure to go down to halfway between the hock and the paw, midline on the abdomen, to the last rib cranially and midline dorsally.

Vacuum the hair away and replace the towel on the table if required.



Paw preparation

Place a glove on the surgical paw and then wrap tightly with Vetwrap.

Skin Preparation

Prep the entire leg with a chlorhexidine scrub for two minutes, followed by alcohol. Repeat as necessary until swabs come away clean. Allow to air dry.



Move the patient into theatre

Transfer to theatre and place the patient in lateral recumbency with the surgical leg uppermost.

Hang the surgically prepared leg from a drip stand – this can be done with a towel clamp and tape, a rope tie or a lead

Please provide 2 ropes or leads to be used as leg ties for modifying patient positioning.

The patient is now ready to be handed over to the team at
Melbourne Animal Specialist Hospital